

RMH8AC(M)4000

Shim type

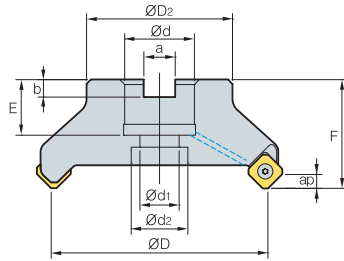


Fig. 1

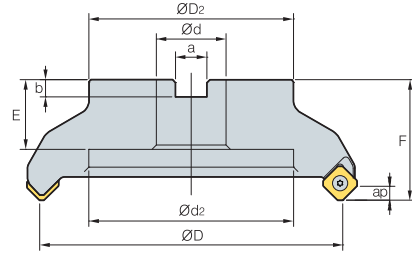


Fig. 2



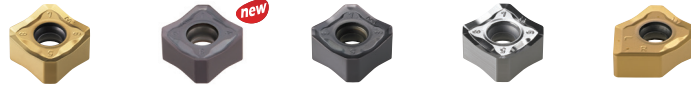
(mm)

Designation	ØD	ØD2	Ød	Ød1	Ød2	a	b	E	F	ap	Fig.		
RMH8AC													
(RMH8ACM)													
4080HR-M	7	80	57	25.4 (27)	14	20	9.5 (12.4)	25 (23)	50	6.0	6.0	1.2	1
4100HR-M	8	100	67	31.75 (32)	18	26	12.7 (14.4)	33 (25.5)	63 (50)	6.0	6.0	1.7	1
4125HR-M	10	125	87	38.1 (40)	22	32	15.9 (16.4)	36 (30)	63	6.0	6.0	3.6	1
4160R-M	12	160	107	50.8 (40)	-	107	19 (16.4)	38 (32)	63	6.0	6.0	5.3	2
4200R-M	14	200	130	47.625 (60)	-	135	25.4 (25.7)	38 (32)	63	6.0	6.0	7.1	2
4250R-M	16	250	180	47.625 (60)	-	180	25.4 (25.7)	38 (32)	63	6.0	6.0	11.9	2
4315R-M	20	315	240	47.625 (60)	-	238	25.4 (25.7)	38	63	6.0	6.0	18.8 (18.6)	2
4400R-M	26	400	260	47.625 (60)	-	238	25.4 (25.7)	38	80	6.0	6.0	37.7 (37.4)	2

()Metric size

Available inserts

SNM(E)X-MF SNEX-ML SNM(E)X-MM SNEX-MA SNEX-W



Designation	Cermet		Coated										Uncoated			page			
	CN2000	CN30	NCM325	NC5330	NCM535	NCM545	PC2505	PC2010	PC3600	PC3700	PC6510	PC9530	PC9540	PC5300	PC5400		ST30A	G10	H01
SNEX	1206ANN-MF								●	●	●			●	●				E22 E23 E24
	1206ANN-ML													●	●				
	1206ANN-MM								●	●	●	●		●	●				
	1206ANN-MA																	●	
	1206ANN-W																		
SNMX	1206ANN-MF				●				●	●	●		●	●	●				
	1206ANN-MM			●	●				●		●	●		●	●				

Available arbors

Designation	Available arbors		
	RMH8AC	RMH8ACM	
RMH8AC	4080HR-□	BT□□ -FMA25.4-□□	BT□□ -FMC27-□□
(RMH8ACM)	4100HR-□	BT□□ -FMA31.75-□□	BT□□ -FMC32-□□
	4125HR-□	BT□□ -FMA38.1-□□	BT□□ -FMB40-□□
	4160R-□	BT□□ -FMA50.8-□□	BT□□ -FMC40-□□
	4200R-□	BT□□ -FMA47.625-□□	BT□□ -FMB60-□□
	4250R-□		
	4315R-□		
	4400R-□		

Parts

Specification	Screw	Shim	Shim Screw	Wrench
Ø80~Ø400	FTKA0412B	SS42RM8	SHXN0609F	TW15S

Available inserts E22~E24 Available arbors and bolt E400~E402

